

PT SANWELL AUSTINDO

Company Profile

PT Sanwell Austindo was found in 1992 in Jakarta, Indonesia. The company still maintains its corporate headquarters in Jakarta, and is a professional operated business.

PT Sanwell Austindo has evolved over the years to a full service in plumbing suppliers and manufacturers of a wide range of plumbing products and equipment ranging from sewage and water treatment plant through to pipes, valves, taps for residential, commercial, mining, hospital, safety, hotel, public facility and manufacturing industry.

We manufactured of our own products/ brands (*Smartdrain, Elio, Austindo Trap, Grease Trap, Scrub sink, Industrial Drains, Etc.*) and also authorized distributor a number of well-known manufacturers plumbing and sanitary products from Europe and Australia such as Uponor (*Germany*), Studor (*UK*), Delabie (*France*), Enware (*Australia*), Caroma (*Australia*), Roca (*Spain*), Nicolazzi (*Italy*), Daniel (*Italy*), Vado (*UK*) and many more.

Our own products, especially *Smartdrain* already have a patent certificate that applied for Indonesian market, also we have a patent certificate that applied for Singapore market. This *Smartdrain* have been penetrated and exported to Singapore and other Southeast Asia countries and also to Middle East. *Smartdrain* as conventional floor drain replacement giving you the opportunity to blend invention, quality and unique design into the bathroom. Manufactured in stainless steel grade-304 and ABS body, these drains maintain a good hygiene in your bathroom, as well as its functional and aesthetical aspects.

We pride ourselves on our customer service and our ability to supply clients with the different types of products, from extensive new construction to the simplest repair and remodel.

Our passion for innovation and proactive nature has seen Sanwell Austindo Group become one of Indonesia's premier providers of plumbing and sanitary solutions for any-scale building projects. Spanning the entire country, our substantial footprint is setting us apart as a valuable partner for successful project developments.

With extensive experience in all aspects of plumbing, our expertise and solid core values make Sanwell Austindo Group a valuable alliance partner for success. Our quality management system ensures the highest quality workmanship, at every stage of the process, to deliver exceptional and unsurpassed results.



While our work speaks for itself, our greatest strength comes from our ingrained culture of building solid client and supplier relationships, maintaining open lines of communication, from concept to completion and beyond.

We are Indonesian owned, and is dedicated to delivering inspired solutions to developments nationwide. We understand 'time is money' and therefore work is completed on time, every time. Our safety and environmental awareness ensures each and every project is completed safely, with minimal impact on the surrounding environment.

We always commite to a long term relationship with every customers, and our team have kept the same spirit "***Innovations provide total solutions***".

Address

Jl. Gunung Sahari Raya No. 73C/8, Jakarta 10610, Indonesia

Phone : 62 (21) 4245952, 4245957

Facsimile : 62 (21) 4246061

Website : www.austindo.id

E-mail : sanwell@austindo.id

Projects Type

- Hotel
- Apartment
- Hospital, Healthcare Facilities & Care Homes
- Office Tower
- Shopping Mall
- Education Institution
- Public Facilities (*Government Institution, Rest Area, Etc.*)
- Residential
- Manufacturing Industries (*Factory, Warehouse, Plant, Etc.*)
- Mining & Safety

List of Products

- Plumbing and Indoor Climate Solution
 - ✓ Pipe & Fittings (*PEX-a*) & Radiant (*Underfloor*) Cooling Technology – UPONOR
 - ✓ Air Admittance Valve (AAU) – STUDOR
 - ✓ Components for Plumbing & Heating Systems – RBM
 - ✓ P-Trap Drainage Systems – AUSTINDO
- Commercial and Hospital
 - ✓ Sanitary Fixtures & Fittings – SMARTDRAIN, ELIO, DELABIE, ENWARE, GESSI, LAUFEN, ROCA, VADO
 - ✓ Hospital Equipment & Medical Tapware – AUSTINDO SCRUB UP SINK, DELABIE, ENWARE
- Industrial and Safety
 - ✓ Spill Containment – ENPAC
 - ✓ Emergency Decontamination and Safety – ENWARE
 - ✓ Industrial/Pharmaceutical Floor Drain – AUSTINDO
 - ✓ Industrial and Safety
 - ✓ Stainless Steel/Metal Sheet Fabrication – AUSTINDO

Our Products



smartdrain 
UNIQUE AND DECORATIVE FLOOR DRAIN

Giving you the opportunity to blend invention, quality and unique design into the bathroom. Manufactured in stainless steel grade-304 and ABS body, these drains maintain a good hygiene in your bathroom, as well as its functional and aesthetical aspects.



austindo TRAP

austindo TRAP system
 Improve your plumbing by installing an austindo TRAP

- ODOUR FREE
- LESS JOINTS
- EASY TO INSTALL
- COST EFFECTIVE

NOM. SIZE	TYPE	A	B	C	D	W
8050		80	50	40	50	210
8065		80	50	40	65	210

JIS STANDARD



Safyooz
 CRAFTED BY IMAGINATION

Committed to your comfortable living, we present you Safyooz, a high quality bathroom and sanitary wares. We are specialized in hand-finished stone composite bathwares, to provide you comfort and luxuries, close to nature ambiance. Minimum in machinery and more on handcrafting. Safyooz is the outcome of art and passion, taking you to higher level of gracious living.



DELABIE

Stainless Steel Sanitary Wares

Design in Public Places

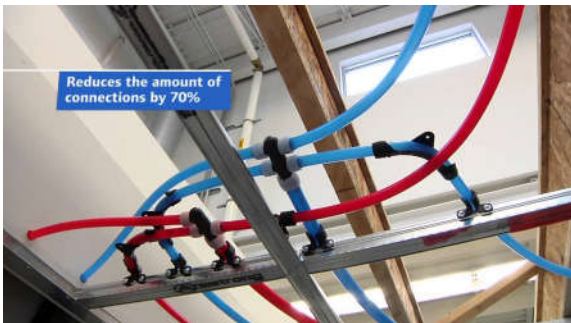
Users' needs have changed. Even if cleanliness is fundamental, comfort and aesthetics also play an important role in upholding the facility manager's or owner's image.

The perfect choice for standard installations

The installation of underfloor heating has become a standard and therefore installers prefer an easy and efficient way of installation. With the Uponor Smart underfloor heating system we offer a complete system in an affordable quality. The system is suitable for all types of screeds. The basis is the smart UFH-pipe made of polyethylene with an oxygen diffusion layer for heating applications. The pipe fixing will be done with a tacker panel and clips. All components are designed to ensure highest safety and reliable operation.

uponor

Smart Underfloor Heating and Cooling



Quick and easy – Pe-Xa

Pipe system for tap water and radiator connection

What is the difference between Uponor Pe-Xa pipes and conventional PE-X pipes?

It's the memory and shrinkback effect of the PE-Xa material. After bending or expanding the pipe goes back to the original location. The Uponor PE-Xa pipes are high-pressure crosslinked which reaches the highest linking factor of all crosslinking methods.



Austindo Scrub Up Sink
for Hospital

AUSTINDO SCRUB UP SINK
Free Standing H Series



Specifications :

- Stainless Steel 304
- High Quality Material and Finished
- Available in 1, 2 and 3 Washing Station



Automatic Soap Dispenser
Stainless Steel Cover
by **austindo**



Removable Spout for Sterilization
Bacterial issue inside the tapware



Automatic Sensor Operation
with Auto Flush every 24 hours
by **DELABIE**

Easy for Maintenance

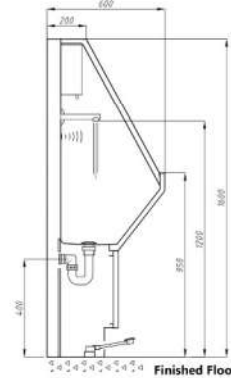
More Hygienic Water with :

- Clean Water PE-Xa Pipe by **uponor**
- UV Sterilizer
- Water Filter 5 Micron
- Thermostatic Mixing Valve



Jakarta Phone : +62 21 424 5932 Email : sanwell@austindo.id
Bali Phone : +62 361 767 570 Email : bali@austindo.id

Technical Drawing



- 1 (one) station, L= 1000 mm
- 2 (two) stations, L= 1600 mm
- 3 (three) stations, L= 2400 mm

www.austindo.id

Grease Trap S1

Grease and oils removal system is a totally engineered system for separating free floating grease and oils from drain water flows. The separated grease and oils are trapped within the stainless steel tank and can be manually recovered and guaranteed no odour with rubber seal. Only the "cleaned" water is allowed to pass through the system into the drain lines. Each unit also separates solid food waste into a removable basket. Austindo Grease Trap S1 can be used in a wide variety of applications from restaurants and food processing operations to many types of industrial operations.



Installation

- Ensure basket can be easily removed
- Allow access to internal parts
- Ensure gravity flow away from unit
- Allow access to grease trap
- Ensure gravit foe away from unit



Project References

SMARTDRAIN

NO	PROJECT	PROJECT TYPE	LOCATION
1	Shangrilla Hotel	Hotel	Jakarta
2	Oak Wood Premier Cozmo	Apartement	Jakarta
4	Plaza Indonesia	Apartement	Jakarta
5	FX Sudirman	Apartement	Jakarta
6	East Cost	Apartement	Singapore
7	Scotts Square	Apartement	Singapore
8	Freeport Ridge Cam	Office & Factory	Papua
9	W Hotel	Hotel & Resort	Bali
10	Gandaria City	Apartement	Jakarta
11	Amaroossa Hotel Bandung	Hotel	West Java
12	Nikko Hotel	Hotel	Jakarta
13	Mercure Hotel Banjarmasin	Hotel	South Kalimantan
14	Pullman Hotel Kuta	Hotel & Resort	Bali
15	Marina Bay Sand Hotel	Apartement	Singapore
16	Skyline 360@St Thomas Walk Condominium	Apartement	Singapore
18	Swissbell Hotel -Balikpapan	Hotel	East Kalimantan
19	Wheelock Place - Orchard Road	Apartement	Singapore
20	Ardmore Park - Admore Road	Apartement	Singapore
21	Marriott Hotel - Orchard Road	Apartement	Singapore
22	Fontana Hotel & Enseval	Hotel & Resort	Bali
23	Sherwood Residence	Apartement	Jakarta
26	Rizt Carlton	Hotel & Resort	Bali
27	Penthouse @ Murjan Dubai	Apartement	Dubai
28	Clarion Hotel Kendari	Hotel	South Sulawesi
29	Sofitel Nusa Dua	Hotel	Bali
30	Sheraton Hotel Gandaria City	Hotel	Jakarta
31	Park Inn Radison Makassar	Hotel	South Sulawesi
32	Pantai Indah Kapuk Mall & Hotel	Mall & Hotel	Jakarta
34	The Pakubuwono Spring	Apartement	Jakarta
35	Jo Ciputra Karya Pancasakti Nugraha	Residensial	Medan
36	TG-Lounge Airport Makassar	Airport	Makassar
37	Grand Indonesia	Shopping Mall	Jakarta
38	Trans Jakarta	Transportation	Jakarta
40	Dialog Hotel	Hotel	Banyuwangi
41	Binus University	College	Jakarta
42	Apartmen Dyokara Medan	Apartement	Medan

AUSTINDO TRAP

NO	PROJECT	PROJECT TYPE	LOCATION
1	Four Seasons Apartment	Apartment	Jakarta
2	The Villas	Hotel & Resort	Bali
3	Begawan Giri Annex	Hotel & Resort	Bali
4	Merck Indonesia	Factory	Jakarta
5	Uma Resort	Hotel & Resort	Bali
6	Kedutaan Mesir	Embassy	Jakarta
7	Trade Center Mall Surabaya	Shopping Mall	East Java
8	Oak Wood Premier Cozmo	Apartment	Jakarta
9	Pacific Palace	Office Tower	Jakarta
10	Padma Hotel Bali	Apartment	Bali
11	Freefort Ridge Camp-Papua	Man Camp/ Mining	Irian Jaya
12	Kuningan Place	Apartment	Jakarta
13	The View Villa Project Jimbaran	Hotel & Resort	Bali
14	Eastcost Residence Surabaya	Apartment	East Java
15	Gandaria City	Shopping Mall	Jakarta
16	Villa Arjuna Uluwatu	Hotel & Resort	Bali
17	Bali Padma Hotel legian	Hotel & Resort	Bali
18	Del Mango Nakula	Hotel & Resort	Bali
19	Kota Casablanca Apartment	Apartment	Jakarta
20	Artotel Hotel Surabaya	Hotel	Jawa Timur
21	New British Embassy	Embassy	Jakarta
22	Gudang Garam Tower	Office Tower	Jakarta
23	152 SQ Accomodation At Prambanan	Man Camp/ Mining	Papua
24	C151 Villas	Hotel & Resort	Bali
25	Marriot Seminyak	Hotel & Resort	Bali
26	U-Residence 2-Lippo Karawaci Tangerang	Apartment	Banten
27	Alila Hotel Bintan	Hotel	Kepulauan Riau
28	Pondok Indah Residence	Apartment	Jakarta
29	Tunjungan Plaza 6 Surabaya	Shopping Mall	Surabaya
30	Kensington Residence	Residential	Jakarta
31	Trans Jakarta	Transportation	Jakarta
32	Apartmen Anderson	Apartment	Surabaya
33	Benson Apartment	Apartment	Surabaya
34	Hotel Ibis Bogor	Hotel	Bogor

SAFYOOZ

NO	PROJECT	PROJECT TYPE	LOCATION
1	Four Seasons	Hotel & Resort	Jimbaran, Bali
2	Alayana Resort	Resort	Ubud, Bali
3	UMA	Hotel	Ubud, Bali
4	Padma Hotel & Resorts	Hotel & Resort	Legian, Bali
5	Nikko Hilton Hotel	Hotel	Nusa Dua, Bali
6	New World Grand Bali Resort	Resort	Uluwatu, Bali
7	Mercure Hotel	Hotel	Kuta Beach, Bali
8	Anantara Resort	Resort	Uluwatu, Bali
9	Westin Ubud Resort & Spa	Resort & Spa	Ubud, Bali
10	Alila SCBD	Hotel	Jakarta
11	Park Hyatt	Hotel	Jakarta
12	D'Leedon Condominium	Apartment	Singapore
13	Four Seasons Kuda Hurna	Resort	Republic of Maldives
14	Four Seasons Landaa Giraavaru	Resort	Republic of Maldives
15	Four Seasons Private Island - Voavah	Resort	Republic of Maldives
16	W Hotel Sentosa	Hotel	Singapore
17	Asimont Villas & Residences	Villa	Singapore
18	The Sculptura Ardmore	Apartment	Singapore
19	Fusionopolis Garden	Park	Singapore

UPONOR – RADIANT COOLING

NO	PROJECT	PROJECT TYPE	LOCATION
1	ATMI-Cikarang-Bekasi	School	West Java
2	Herman Miller	House & Office	Jakarta
3	Kompas Tower	Office	Jakarta
4	JHL Solitaire Luxury Hotel	Hotel	Jakarta
5	Mr. Jerry's House	Residential	Tangerang

UPONOR – PEX PIPES AND FITTINGS

NO	PROJECT	PROJECT TYPE	LOCATION
1	Puri Casablanca	Apartement	Jakarta
2	Four Seasons Apartment	Apartement	Jakarta
3	The Villas - Seminyak	Hotel & Resort	Bali
4	Bell Private Residence	Hotel & Resort	Bali
5	Chedi Villa's	Hotel & Resort	Bali
6	Uma Resort	Hotel & Resort	Bali
7	Royal Jimbaran Bay	Hotel & Resort	Bali
8	Mabes Polri	Army Post	Jakarta
9	Vajra Villas	Hotel & Resort	Bali
10	Bernie Thompson	Hotel & Resort	Bali
11	Pakubuwono Residence	Apartement	Jakarta
12	Senayan Residence	Apartement	Jakarta
13	Royal Jimbaran Bay II	Hotel & Resort	Bali
14	OAK Wood	Apartement	Jakarta
15	City Lofts	Apartement	Jakarta
16	Intan Laut Selatan	Hotel & Resort	Bali
17	Pantai Mutiara	Apartement	Jakarta
18	Batu Kara & Spare	Hotel & Resort	Bali
19	Lombok Projects	Hotel & Resort	Nusa Tenggara Barat
20	Wong Residence	Hotel & Resort	Bali
21	Teo Residence	Hotel & Resort	Bali
22	Mandarin Oriental Hotel	Hotel	Jakarta
23	Smart Villas	Hotel & Resort	Bali
24	Padma Hotel	Hotel & Resort	Bali
25	The Pakubuwono View II	Apartement	Jakarta
26	Goa Gong Villa	Hotel & Resort	Bali
27	Nyanyi Villa Tanah Lot	Hotel & Resort	Bali
28	DELL MANGO Nakula	Hotel & Resort	Bali
29	The Westin Resort	Hotel & Resort	Bali
30	ATMI-Cikarang-Bekasi	School	West Java
31	Grand Tropic Hotel	Hotel	Jakarta
32	JHL Solitaire Luxury Hotel	Hotel	Jakarta

DELABIE

NO	PROJECT	PROJECT TYPE	LOCATION
1	Akademi Teknik Mesin Industri (ATMI), Cikarang	School	West Java
2	Nusadua Beach Hotel, Nusadua	Hotel	Bali
3	Ayodya Resort (Hilton Hotel), Nusadua	Hotel	Bali
4	The Westin Resort, Nusadua	Hotel & Resort	Bali
5	Bali Padma Hotel, Legian	Hotel	Bali
6	Club Med Hotel, Nusadua	Hotel	Bali
7	Pansea Hotel, Jimbaran	Hotel	Bali
8	1500 Man Camp, Freeport	Man Camp/ Mining	Irian Jaya
9	Rest Area KM. 57, Karawang	Rest Area	West Java
10	Danone Indonesia, Cikarang	Factory	West Java
11	Hermina Hospital, Jatinegara	Hospital	East Jakarta
12	Banyumas Hospital, Banyumas	Hospital	Central Java
13	L'oreal Indonesia, Cikarang	Office & Factory	West Java
14	Otsuka Indonesia, Malang	Office & Factory	East Java
15	MSD Packaging, Pandaan	Office & Factory	East Java
16	Jungle Land, Bogor	Amusement Park	West Java
17	Mayapada Hospital	Hospital	South Jakarta
18	Bunda Hospital, Palembang	Hospital	South Sumatera
19	Ignatius Loyola Ecotech Campus, Cikarang	School	West Java
20	Pondok Indah Hospital	Hospital	South Jakarta
21	Melinda Hospital, Bandung	Hospital	West Java
22	Bukit Asam Hospital, Palembang	Hospital	South Sumatera
23	Semen Padang Hospital, Padang	Hospital	West Sumatera
24	Harapan Anda (Moslem Hospital), Tegal	Hospital	Central Java
25	Givaudan Indonesia, Depok	Factory	West Java
26	Jotun Indonesia Bekasi	Office & Factory	West Java
27	Alexis	Hotel	Jakarta
28	Kerry Ingredients	Factory	Cikarang
29	RS Graha Permata Ibu Depok	Hospital	West Java
30	Talenta Gelora Serafim, PT	Ship	Jakarta
31	Trans Jakarta	Transportation	Jakarta
32	Mattel Indonesia, PT	Factory	Bekasi
33	Rumah Mode, Bandung	Shopping Mall	West Java
34	Saipem Indonesia	Mining/ Drilling	Balikpapan
35	Masjid Cawang	Mosque	Jakarta

AUSTINDO SCRUB UP SINK

NO	PROJECT	LOCATION
1	RS. Mitra International	Jakarta
2	RS. Bintaro International	Tangerang
3	RS. Graha Medika	Jakarta
4	Coca Cola Amatil-Bekasi	Jawa Barat
5	Philips Moris Inc.	Malang
6	RS. Mitra Kelapa Gading	Jakarta
7	Klinik Mata Nusantara-Kemayoran	Jakarta
8	RS. Mitra Bekasi Timur	Jawa Barat
9	RS. Sentosa International	Bandung
10	RS. Global	Jakarta
11	Wing International Hospital-Sanglah	Bali
12	Universitas Syah Kuala	Banda Aceh
13	Klinik Mata Nusantara	Manado
14	RS. Global Awal Bros - Bekasi	Jawa Barat
15	RS. Mitra Keluarga - Tegal	Jawa Tengah
16	RSU. Zainal Abidin - Aceh	Aceh
17	RS. Mitra Keluarga - Cikarang	Bekasi
18	RSU. Haji - Makassar	Makassar
19	RS. Permata Bunda	Medan
20	RSUD Pulang Pisau	Kalimantan Tengah
21	RS. Kasih Ibu	Bali
22	Klinik Mata Nusantara - Semarang	Jawa Tengah
23	RS. Mitra Keluarga - Cibubur	Jakarta
24	RSA. Universitas Gajahmada	Yogyakarta
25	RS. Global Awal Bros - Makassar	Sulawesi Selatan
26	Mayapada Hospital - Tangerang	Banten
27	RS.Orthopedic Setia Budi - Medan	Sumatera Utara
28	RS.Amanda Lembang-Bandung	Jawa Barat
29	RS.Bhakti Wara - Pangkal Pinang	Bangka-Belitung
30	RS.Harapan Keluarga - Lombok	Nusa Tenggara
31	Klinik Mata Nusantara - TB.Simatupang	Jakarta
32	RS.Global Awal Bross-Pekan Baru	Riau
33	RSUD- Sultan Imanuddin Pangkalan Bun	Kalimantan Tengah
34	Klinik Bersalin Lina Palangka Raya	Kalimantan Tengah
35	PacHealth@The Plaza	Jakarta
36	RS.Karya Medika Cikarang Barat,Bekasi	Jawa Barat
37	RSMK Bintaro	Jakarta
38	RS Bunda Palembang	Pekanbaru
39	RS Premiere Bintaro	Jakarta

GREASE TRAP

NO	PROJECT	PROJECT TYPE	LOCATION
1	Toyota Astra Motor	Factory	Jakarta
2	Portugal Embassy	Embassy	Jakarta
3	Philipina Embassy	Embassy	Jakarta
4	Lippo Karawaci Tangerang	Office Tower	Banten
5	British Council	School	Jakarta
6	ITC Depok	Shopping Mall	West Java
7	La Piazza	Shopping Mall	Jakarta
8	DBS Bank	Office	Jakarta
9	Central Plaza Benhil	Shopping Mall	Jakarta
10	Capital Residence	Apartment	Jakarta
11	Ipeka Tangerang	Factory	Banten
12	BCA Wisma Asia II	Office	Jakarta
13	Klinik Autis & Lansia	Hospital	Jakarta
14	Sumeracon Serpong	Shopping Mall	Banten
15	Adijaya Utama	Hotel & Resort	Bali
16	Drupadi Villas	Hotel & Resort	Bali
17	Resa SMK 1-3 Banda Aceh	School	Aceh
18	Bali Villas 2	Hotel & Resort	Bali
19	COW Villa II Lombok	Hotel & Resort	Lombok
20	RS. ST Carolus-Serpong	Hospital	Banten
21	Supreme Energy Office Tower-Phase 2	Office Tower	Jakarta
22	Jotun Indonesia Cibitung, Bekasi	Factory	West Java
23	Plaza Summarecon	Apartment	Jakarta
24	Citibank South Quarter	Office	Jakarta
25	Graha Cipta Hadiprana	Residential	Jakarta
26	ABC Isuzu	Office	Jakarta
27	Kurator Café	Caffe	Jakarta
28	Binus Kampus	Collage	Bekasi
29	Tanadewa Villas Nusa Dua	Hotel & Resort	Bali
30	Kasih Ibu Tabanan	Hotel & Resort	Bali
31	Menara Prima 2	Office Tower	Jakarta
32	Soho Pulogadung	Factory	Jakarta
33	Pondok Indah Residence	Apartment	Jakarta
34	Australia Consulate	Embassy	Jakarta
35	Providence Park	Apartment	Jakarta
36	Adyaksa 's	Hotel & Resort	Bali
37	PMI Master	Office	Jakarta
38	Ropongi Setiabudi	Office	Jakarta